

Kid Scoop

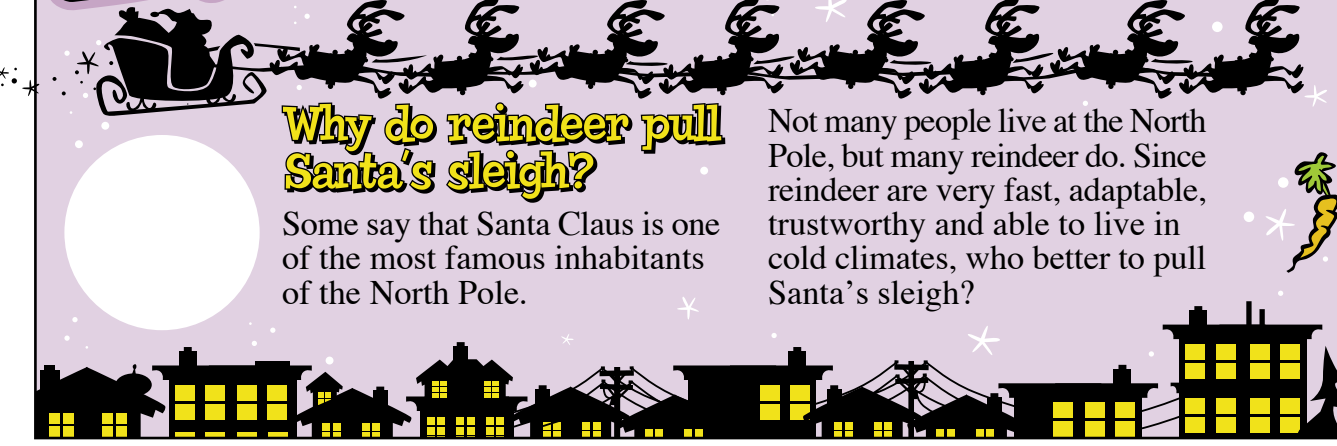
THE AWARD-WINNING PRINT & ONLINE FAMILY FEATURE

Puzzle answers, games, opinion polls and much more at:
www.kidscoop.com

© 2009 by Vicki Whiting, Editor Jeff Schinkel, Graphics Vol. 26, No. 1

Kid Scoop Together: Christmas Bird Count

REINDEER



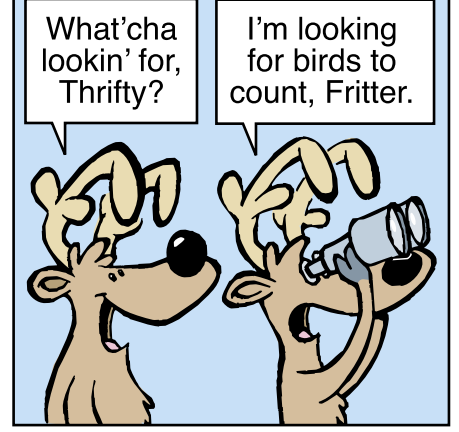
Why do reindeer pull Santa's sleigh?

Some say that Santa Claus is one of the most famous inhabitants of the North Pole.

Not many people live at the North Pole, but many reindeer do. Since reindeer are very fast, adaptable, trustworthy and able to live in cold climates, who better to pull Santa's sleigh?

The tradition of reindeer pulling Santa's sleigh was first recognized by Clement C. Moore in his famous poem. Use the code to discover the name of Moore's poem.

W	T	R	A	D
8	17	8	4	3
N	G	B	F	R
5	4	8	3	6
R	M			
2	4	5	7	17
1 = A	4 = H	7 = S		
2 = C	5 = I	8 = T		
3 = E	6 = O	9 = U		

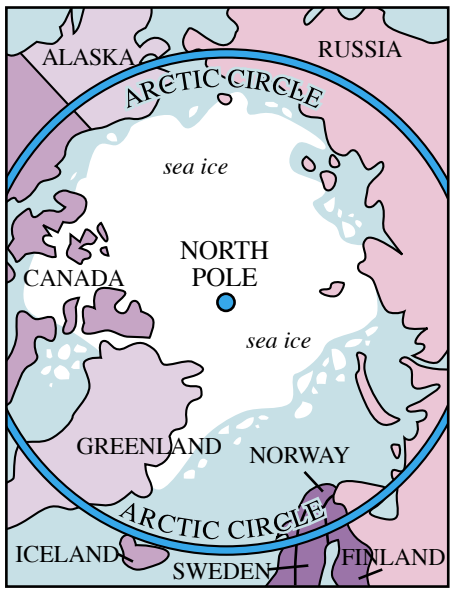


I'm taking part in the Annual Christmas Bird Count. By counting birds in the same region every year at the same time, it gives scientists an idea of the health of the environment.



On Top of the World

Not all reindeer are magical like Santa's, but they are still amazing in other ways. They live in the coldest part of the earth—not just at the North Pole, but also in the uppermost parts of Asia, Europe and North America, that together are known as the Arctic Circle.



Draw this reindeer's other half.

In summer, reindeer shed their heavy fur coats. Their hooves become spongy in springtime to keep them from slipping on the muddy ground.

Which title matches each paragraph best? Draw a line to connect each title to that article.

- Hollow Hairs
- A Step Ahead
- Moss Munchers

Reindeer mostly eat tough grasses and a type of moss called lichen. It is easy for reindeer to eat during the summer, when new plants are growing, but it gets more difficult in winter. Luckily, their sharp hooves help them dig down to get to the food they need.

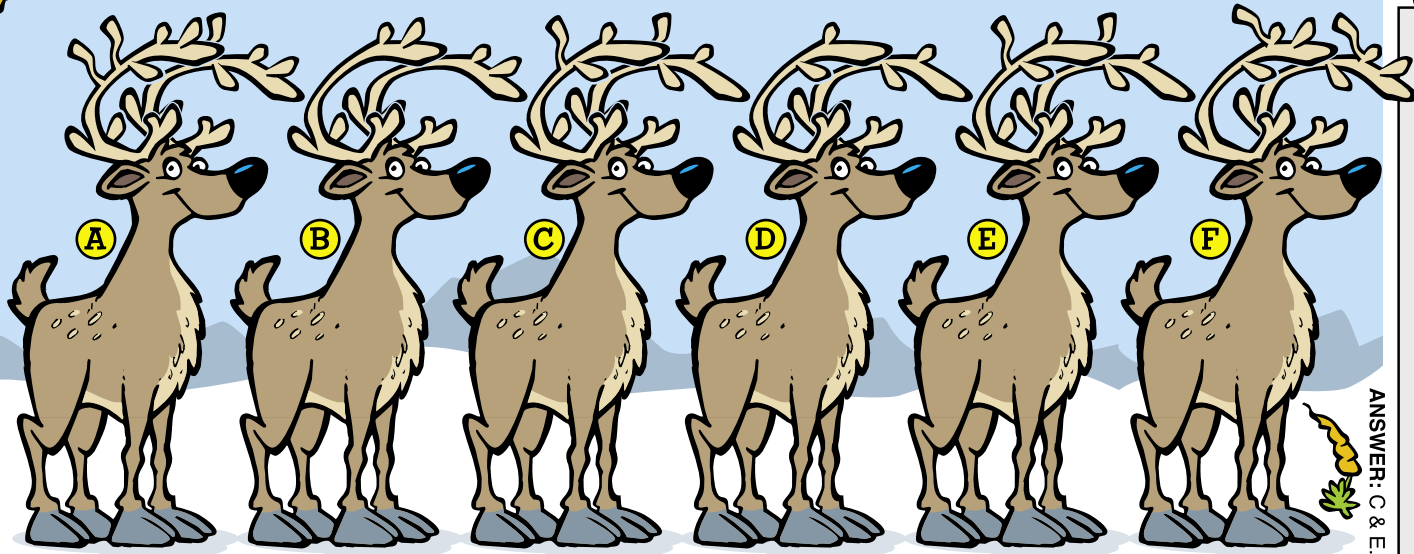
Have you ever walked in deep snow? You take a step and sink. Reindeer have special hooves to help them walk on the snow and ice. Much like snowshoes, their hooves are wide, allowing them to walk on top of the snow without sinking.

A reindeer has a very thick coat of fur, which helps it survive the extreme cold of the Arctic Circle. Each hair in the coat is actually hollow. The animal's body heat warms up the air inside each hair, keeping the reindeer nice and toasty.

About Those Antlers

In most species of deer, only the males have antlers. However, both male and female reindeer have antlers. Every reindeer is born with tiny nubs that eventually grow. Once a year, reindeer shed their antlers, but they always grow back again.

Find the two identical reindeer. Look very closely!



Santa's reindeer love carrots. How many can you find?

Extra! Extra!
Newsy Holiday Cards
Make your own holiday cards by clipping out pictures and words from your local newspaper or printing them from the online edition of your newspaper.
Standards Link: Visual Arts: Use a variety of media to convey meaning.

Kids Count!

Kids can be part of the annual Christmas Bird Count. It's a great school or family activity! To find out how, go to www.kidscoop.com and click on the bird on the home page!

Standards Link: Civics: Understand the importance for individuals and society of commonly-held responsibilities such as being attentive to public issues.

Kid Scoop-doku

Complete the grid by using all the letters in the word SLEIGH in each vertical and horizontal row. Each letter should only be used once in each row. Some spaces have been filled in for you.

S	L	E	I	G	H
		I		S	
G		S		I	
	S				
				H	L
I	E	H		S	

Kid Scoop Puzzler

Reindeer Words

Do the math to match each word with its meaning.

Male reindeer: _____ (14)
Female reindeer: _____ (19)
Baby reindeer: _____ (13)
Group of reindeer: _____ (15)
Sound they make: _____ (16)

8 + 8 = BELLOW 9 + 3 + 3 = HERD
7 + 9 - 2 = BUCK 24 - 5 = DOE 7 + 9 - 3 = FAWN



What is the difference between a reindeer and a caribou? Find out at kidscoop.com/kids

Double Double Word Search

Find the words in the puzzle, then in this week's Kid Scoop stories and activities.

S	E	L	B	A	T	P	A	D	A
L	R	S	S	E	V	O	O	H	H
E	E	P	U	R	L	L	I	K	S
I	E	E	R	N	E	H	C	I	L
G	D	C	V	O	L	L	N	L	H
H	N	I	I	O	H	K	T	W	C
H	I	E	V	E	S	B	U	N	T
A	E	S	A	R	C	T	I	C	A
I	R	T	L	R	D	E	H	S	P

REINDEER
ANTLERS
LICHEN
ADAPTABLE
SURVIVAL
ARCTIC
SLEIGH
HOOVES
SINK
SKILL
HEAT
PATCH
SPECIES
NUBS
SHED

Standards Link: Letter sequencing. Recognized identical words. Skim and scan reading. Recall spelling patterns.

Kid Scoop VOCABULARY BUILDERS

This week's word: **INHABITANT**

The noun **inhabitant** means someone or something that lives in a particular place.

Reindeer are **inhabitants** of lands inside the Arctic Circle.

Try to use the word **inhabitant** in a sentence today when talking with your friends and family members.

JONES NISSAN
"Your Big City Deal with the Small Town Feel!"
731-925-0367
1-866-874-0906
1260 Wayne Road Savannah, TN

Hey Kids! There's something great for you to hear everyday on **WDNX 89.1 FM**
Worship Children's Bible Journey Daily 3:00 p.m.
The Word 925-9236/FAX 925-4238
Life Talk Radio - Inspirational Music

Compliments of **DAVID LONG**
30 Fairground Street Savannah
731-925-9072

JUST 4 KIDS FREE
PIGGY BANK with \$10.00 Deposit
CENTRAL BANK
485 Wayne Road Savannah, TN 38372
436 East Main St. Adamsville, TN 38310
731-925-9046 731-632-0462
9720 Hwy. 57 S.
Member Pickwick Dam, TN 38365 731-689-5043

HEY KIDS!
Cool websites with fun stuff for kids and teens!
Check the links at www.courieranywhere.com

Quality Care. Right Here at Home.
HARDIN HMC MEDICAL CENTER
731-926-8000
935 Wayne Road - Savannah, TN
www.hardinmedicalcenter.org

"Our Children Are Our Future"
HARDIN COUNTY SHERIFF
Sammy Davidson

Compliments of **HARDIN COUNTY HIGHWAY DEPARTMENT**
Paul Blount and Employees